



# MATATIELE LOCAL MUNICIPALITY

Research and analysis of ward profiling: Ward based plans

WARD 16

May 2018

TSHANI  
CONSULTING C.C.



Contents

1. Executive Summary of Ward .....4

2. Introduction.....4

3. Methodology.....5

4. Ward Overview.....5

5. Socio Economic Analysis .....5

6. Built Environment Assessment..... 12

7. Current Projects ..... 14

8. Ward Needs and Priorities ..... 14

9. Stakeholders..... 15

10. Social Challenges ..... 15

List of Tables

Table 1: SWOT Analysis – Community Based Planning Program 2017 (Data Collection).....5

Table 2: Major Event within the Ward – Community Based Planning Program 2017 (Data Collection) .....5

Table 3: Programmes within ward- Community Based Planning Program 2017 (Data Collection).....5

Table 4:Population Size and Distribution within the Ward – Community Based Planning Program 2017 (Data Collection).....6

Table 5: Child and Female Headed Households within the Ward - Census 2011 .....7

Table 6: Education Facilities within Ward - Community Based Planning Program 2017 (Data Collection)..9

Table 7: Churches and Religious Organisations within the Ward - Community Based Planning Program 2017 (Data Collection).....9

Table 8: Health care faciitiies within ward- Community Based Planning Program 2017 (Data Collection)..9

Table 9: Community Halls - Community Based Planning Program 2017 (Data Collection) ..... 10

Table 10: Economic Activity - Community Based Planning Program 2017 (Data Collection)..... 11

Table 11: Agricultural activities- Community Based Planning Program 2017 (Data Collection) ..... 11

Table 12: Products produced in ward- Community Based Planning Program 2017 (Data Collection) ..... 11

Table 13: Existing Skills within the Ward: Community Based Planning Program 2017 (Data Collection).. 12

Table 14: Access to water- Community Based Planning Program 2017 (Data Collection) ..... 12

Table 15: Access to sanitation- Community Based Planning Program 2017 (Data Collection) ..... 13

Table 16: Main source of energy- Community Based Planning Program 2017 (Data Collection)..... 13

Table 17: Roads and Bridges within the Ward- Community Based Planning Program 2017 (Data Collection)..... 14

Table 18: Current Projects within the Ward- Community Based Planning Program 2017 (Data Collection) ..... 14

Table 19: Ward Needs and Priorities - Community Based Planning Program 2017 (Data Collection) ..... 15

Table 20: Infrastructure Priorities - Community Based Planning Program 2017 (Data Collection) ..... 15

Table 21: Stakeholders - Community Based Planning Program 2017 (Data Collection)..... 15

Table 22: Social Challenges - Community Based Planning Program 2017 (Data Collection) ..... 15

List of Figures

Figure 1: Gender Distribution .....6

Figure 2: Age within Ward Distribution – Census 2011 .....6

Figure 3: Language distribution- Census 2011 .....7

Figure 4: Gender of Household Head - Census 2011 .....8

Figure 5: Types of Dwelling within Ward – Census 2011 .....8

Figure 6: Individual Monthly Income - Census 2011 ..... 11

Figure 7: Access to waste disposal- Community Based Planning Program 2017 (Data Collection) ..... 12

Figure 8: Source of Water supply within the Ward- Census 2011 ..... 12

List of Plans

Plan 1: Ward 16 Locality .....4

Plan 2: Educational facilities- Census 2011 .....9

Plan 3: Health care facilities- Census 2011 ..... 10

Plan 4: Other Social Facilities- Census 2011 ..... 10

Plan 5: Households using electricity for Lighting within the Ward - Census 2011 ..... 13

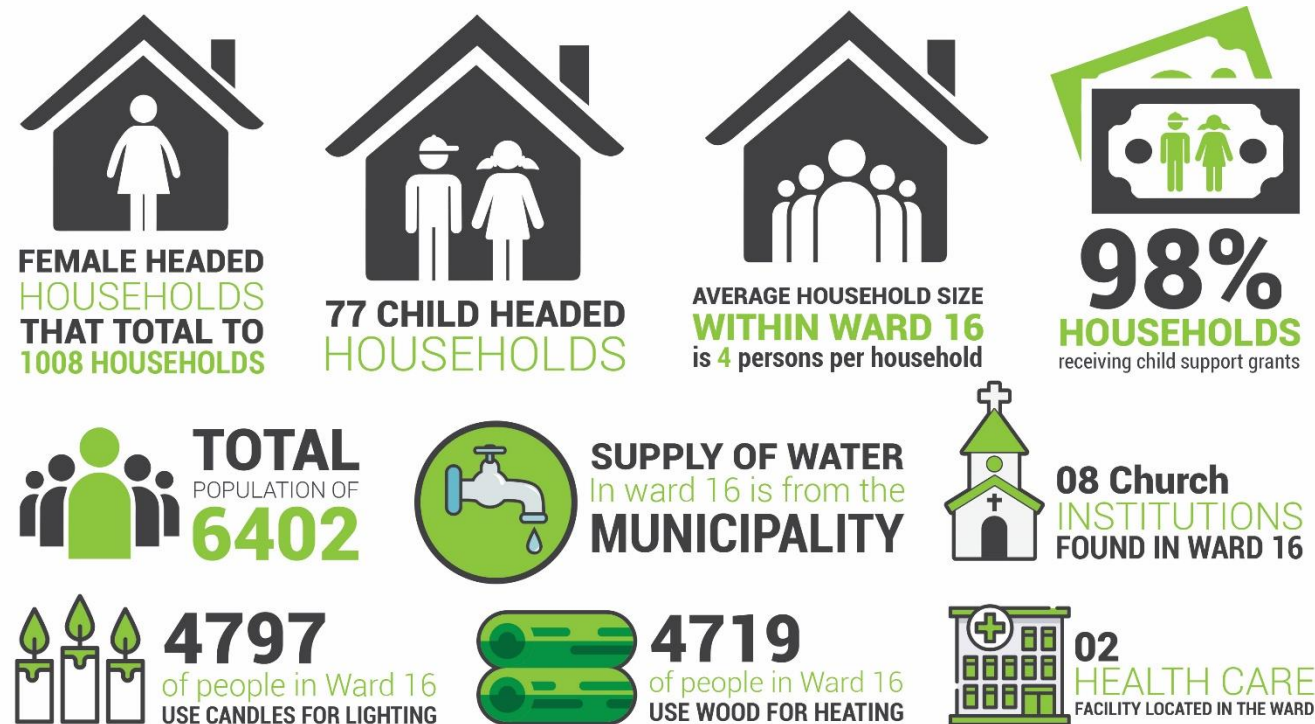
Plan 6: Roads and Bridges within the Ward - MLM GIS ..... 14

## 1. Executive Summary of Ward

Ward 16 comprises of the following villages; Mehloloaneng, Sketlane, Moeaneng, Mechachaneng; Likhetlane, Khoarai, Majoro, Mboho; Maloto, Sprinkaan, khutsong andTsekong. There is total population of approximately 6402 people and 1656 households obtained from 2011 census data. The gender split within the ward is made up of 54% female and 46% males. The average household size within the ward is four (4) persons per household. The most spoken language in Ward 16 is Sesotho followed by Isixhosa.

This ward has shown a significant number of educational facilities, these ranging from pre-schools to high schools. There are two health care facilities within the ward, one clinic is located in Sketlane and other one in Likhetlane, these health care services provides the community with immunisation, family planning and HTC. In terms of water and sanitation, the District Municipality (ANDM) currently provides water and sanitation to Matatiele Local Municipality. All villages within the ward have access to clean water through community taps, even though some villages have access to community taps the water does not come out at times as a results a large number of people have to walk at least 1km away to source water from the dams or streams.

As per the *Community Based Plan Programme 2017 (Data Collection)* the main source of energy within Ward 16 is electricity. This indicates that the level of service within the ward is relatively high. Out of twelve villages that have access to electricity only one village has no access to electricity which Majoro.



## 2. Introduction

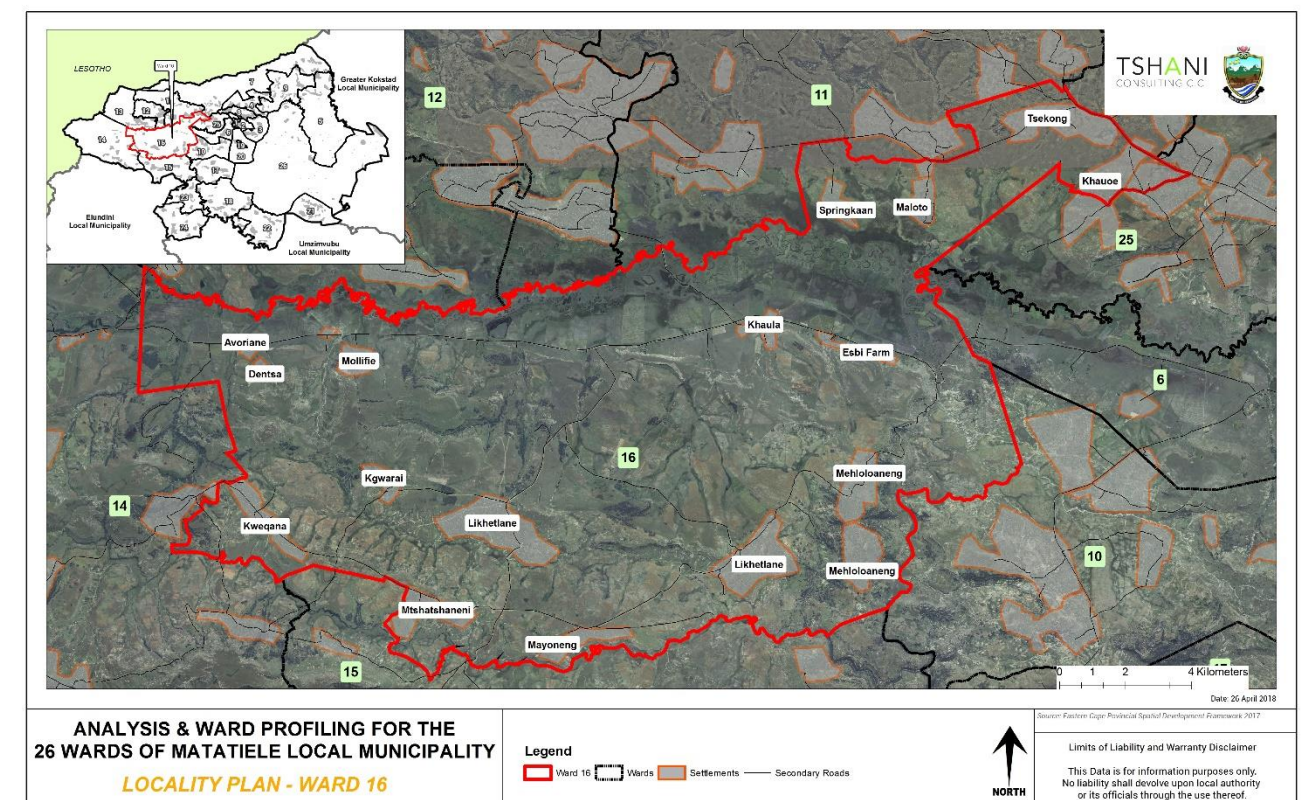
The Matatiele Local Municipality (MLM) appointed Tshani Consulting CC for the analysis and ward profiling for the 26 wards within MLM.

The purpose of this report is to review the current the Ward Based Plan prepared for Ward 16 and the LM that was developed in 2014. Through this exercise the ward profiling ensures the prioritisation of projects and channeling such projects into places of need.

The report serves as the analysis and profiling of Ward 16.

### 2.1. Locality

Ward 16 is situated towards the North West of MLM. The Ward is surrounded by wards 6,10,11,12,13,14,15 and 25. As depicted in the plan below, the main villages within Ward 16 are Mehloloaneng, Sketlane, Moeaneng, Mechachaneng; Likhetlane, Khoarai, Majoro' Mboho; Maloto, Sprinkaan, khutsong andTsekong. It is to be noted that all Wards which have been listed were identified through the community outreach programmes. The Village names captured on plans are as per the villages which exist on the GIS and Census databases.



Plan 1: Ward 16 Locality



### 3. Methodology

The methodology utilised for the analysis and profiling in this report was derived as follows:

1. Synthesis an interpretation of questionnaires and community feedback;
2. Translated information into a Strength, Weakness, Opportunities and Threats analysis;
3. Conducted a verification process on the populations profiles, social profile and economic profile using Census 2011 data which was conducted at a Ward level;
4. A detailed GIS mapping exercise was completed in order to translate the findings into spatially represented outcomes;
5. Ward needs, and priorities were identified for the wards;
6. Needs identified for the ward were translated into projects and a consolidated implementation plan together within financial implications was completed.

The analysis of ward 16 also took its '*point of departure*' from the primary data which was available from the data collection and community consultation completed in the previous phase

### 4. Ward Overview

The section below highlights the specific sections which were analysed in relation to ward 16.

#### 4.1. SWOT Analysis

The SWOT analysis was developed, through a series of engagement sessions with the local community and traditional leadership of Ward 16, by the municipality.

<b><u>STRENGTHS</u></b>	<b><u>WEAKNESSES</u></b>
Natural resources : Sand Streams Tree plantations Agricural activities 2 Clinics	Crime Non- employment Low Education on Skills
<b><u>OPPORTUNITIES</u></b>	<b><u>THREATS</u></b>
Sand mining Quarry Tourism Agricultural activities	Storms Fire Veldt Drug Abuse Wattle

Table 1: SWOT Analysis – Community Based Planning Program 2017 (Data Collection)

#### 4.2. Major events within the Ward

The table below highlights the major events which have taken place /happened within Ward 16 over the last couple of years.

<b>EVENT/ OCCURANCE</b>	<b>YEAR</b>	<b>IMPACT</b>
Heroes walk with HIV	2015	Change of life amongst ward 16 community members
Thanks giving for the former ward councillor	2016	Community Members were inspired

Table 2: Major Event within the Ward – Community Based Planning Program 2017 (Data Collection)

#### 4.3. Services/ Infrastructure and Programmes Within the Ward Within The 5-Year Period (2012-2016)

Ward 16 infrastructure investment for the 5 year period ( 2012-2016)

<b>Type</b>	<b>Year</b>	<b>Beneficiaries</b>	<b>Status / present condition</b>	<b>Impact</b>
Community hall	2013	community	Good but need tables	Shelter for meetings
Electrification of 6 villages	2013	community	Good but there are in fills	Changing people's life
Sport field	2016	youth	Good	The mood of games has changed
Likhetlane Access road	2016	Community	Bad	
Mehloloaneng	2015/16	Community	Under retention	

Table 3: Programmes within ward- Community Based Planning Program 2017 (Data Collection)

### 5. Socio Economic Analysis

#### 5.1. Population Profile

The sub sections below provides an analysis of the population profile of ward 16.

##### 5.1.1. Population Size and Distribution

The total population of Ward 16 is 6 402.

LIST OF VILLAGES/ LOCATIONS/SUB AREAS	OTHER NAME/S FOR THE VILLAGE/ LOCATION	NUMBER OF HOUSEHOLDS			POPULATION SIZE (NUMBER OF PEOPLE)		
		Community Feedback	Census 2011	Projected Household by 2050 growing at 0.3% Per Annum	Community Feedback	Census 2011	Projected Population by 2050 growing at 0.4% Per Annum
Mehloloaneng	N/A	645	240		3898		
Sketlane	N/A	567			3255		
Moeaneng	N/A	285	159		1758		
Mechachaneng	N/A	791			2989		
Likhetlane	N/A	710			2899		
Khoarai	N/A	155			1750		
Majoro	N/A	300			1349		
Mbobo	N/A	210			1574		
Maloto	N/A	183	177		1350		684
Sprinkaan	N/A	142	69		989		
Tsekong	N/A	350	126		2365		
Khutsong	N/A	930			3455		
<b>Total</b>			<b>1656</b>	<b>1 828</b>		<b>6402</b>	<b>7274</b>

Table 4: Population Size and Distribution within the Ward – Community Based Planning Program 2017 (Data Collection)



### 5.1.2. Gender Distribution

The chart below depicts that 54% of the total population of Ward 16 are female. This is typical of most wards within Matatiele. This statistic also speaks to the table below on child headed households.

### Gender Distribution

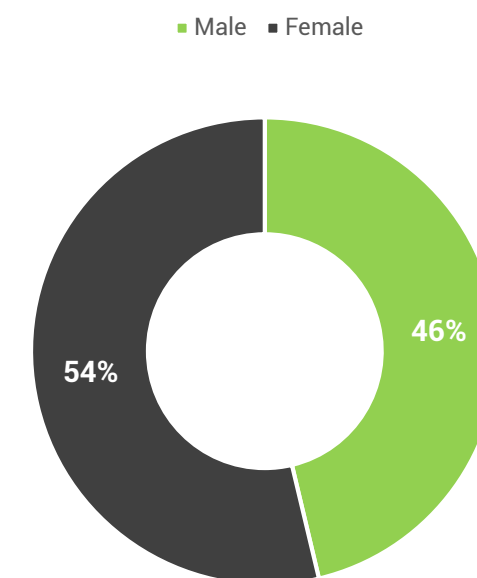


Figure 1: Gender Distribution

### 5.1.3. Age

The dominant age group in Ward 16 is age group 10-14. The bulk of the ward population is between the ages 00-19

### Age Groups

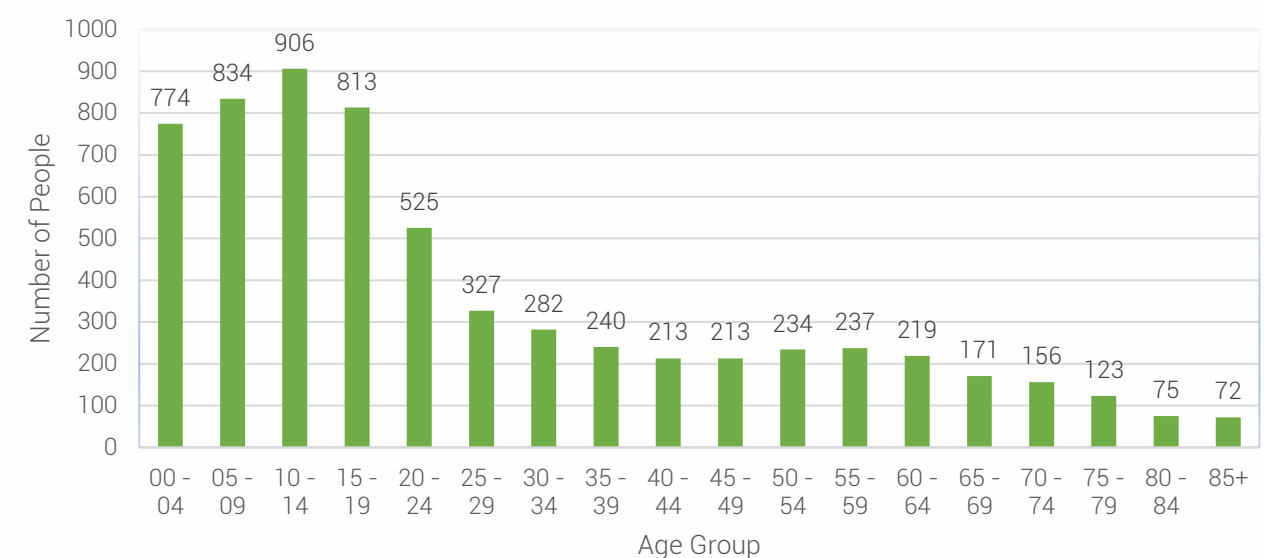


Figure 2: Age within Ward Distribution – Census 2011

5.1.4. Language Distribution

It is evident that the most spoken language in Ward 16 is Sesotho. The language preference correlates to the racial split within ward 16 and is an indication of the language preference which people appreciate.

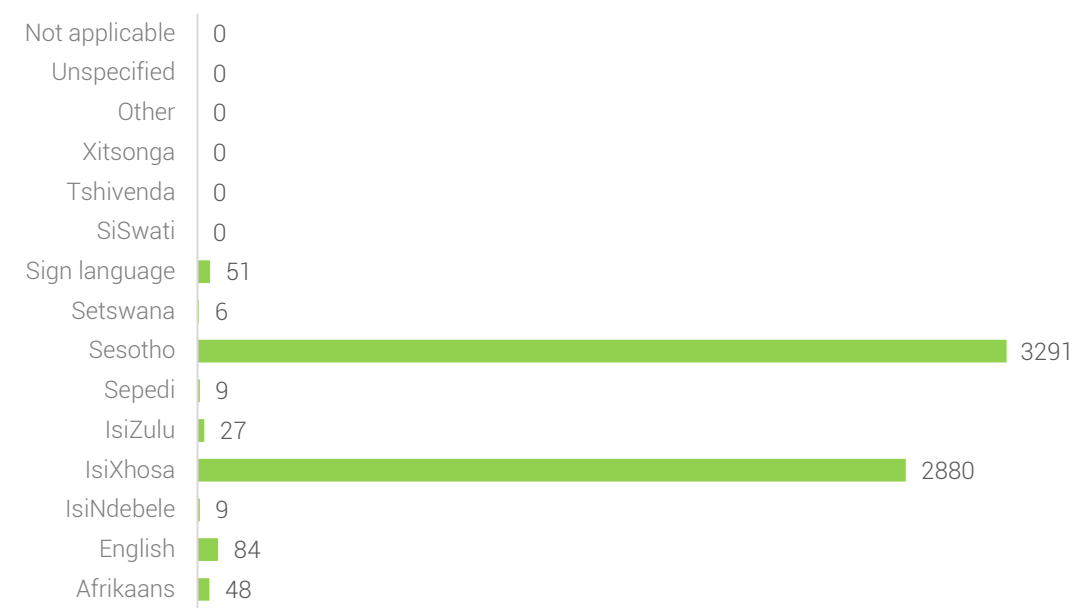


Figure 3: Language distribution- Census 2011

5.1.5. Social Grants

The dependency on grants within Ward 16 continues to be a major challenge. The highest grant assistance been on Child Support in direct correlation with the high number of female headed households and majority female population. Such is a major challenge for the LM, province and country at large.

5.2. Household Profile

The section below details of households within Ward 16 in terms of their size, gender of heads of households and distribution.

5.2.1. Average Household Size

The average household size within Ward 16 includes an average of four (4) persons per household.

5.2.2. Heads of Households

The number of female and child headed households in ward 16 is high (1008 Female headed and 77 Child headed households). The issue of child headed households remains a major challenge in Ward 16 and Matatiele as a whole.

There is a need to prioritise support in the form of community awareness and social programmes in keeping with teenage pregnancy andfamily planning programmes. The challenges is exacerbated by the trends of a larger part of the population which is represented by females also heading many households.

Villages	Child-Headed households		Female-Headed Households	
	Community Feedback	Census 2011	Community Feedback	Census 2011
MALOTO	5		50	105
MEHLOLOANENG	5	12	71	156
SPRINKAAN	4		41	45
MBOBO	5		20	
TSEKONG	7	6	25	72
KHUTSONG	20		80	
SKETLANE	4		99	
LIKHETLANE	6		50	
MOYANENG	4		20	
MECHECHANENG	5		23	
MAJORO	7		18	
KHOARAI	5		20	
Total	77		517	1008

Table 5: Child and Female Headed Households within the Ward - Census 2011

The graph below indicates that approximately 61% of the households in ward 16 are headed by females. This is common in Matatiele and South Africa as a whole were more females populate and most households are headed by women.

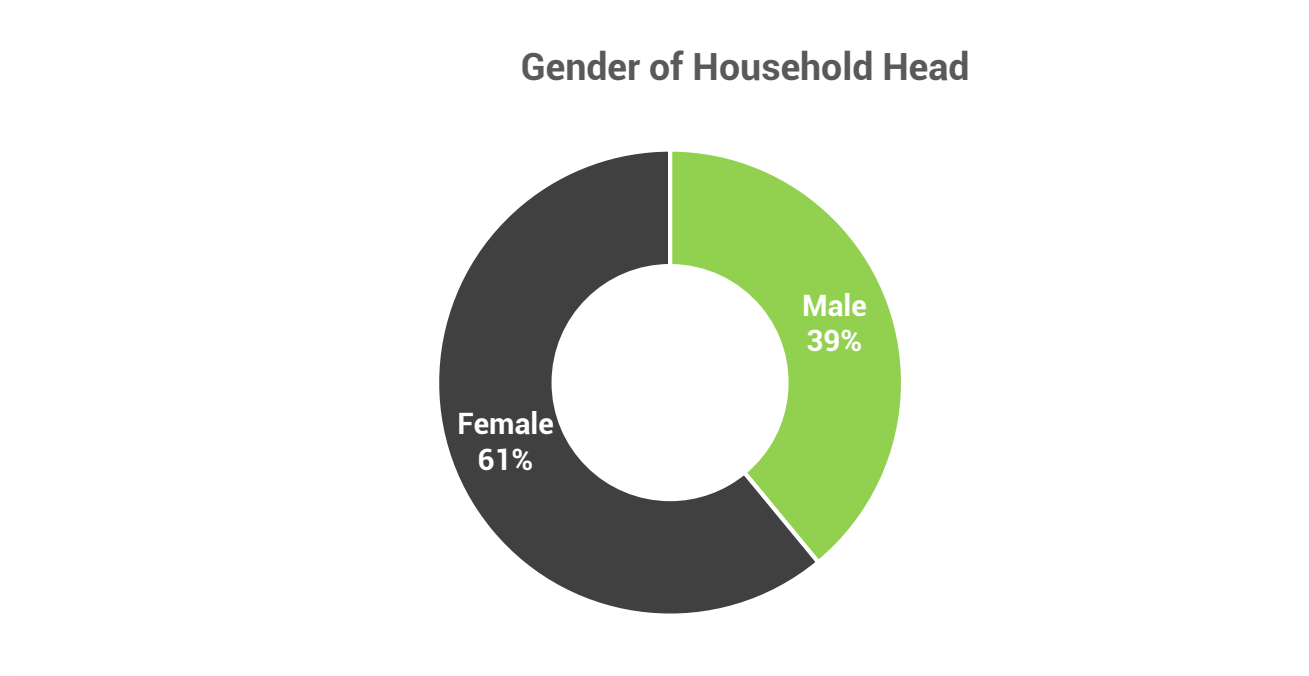


Figure 4: Gender of Household Head - Census 2011

### 5.2.3. Household Dwelling types

Most of the people in within the ward live in a traditional dwelling or hut and some people also live in brick houses.

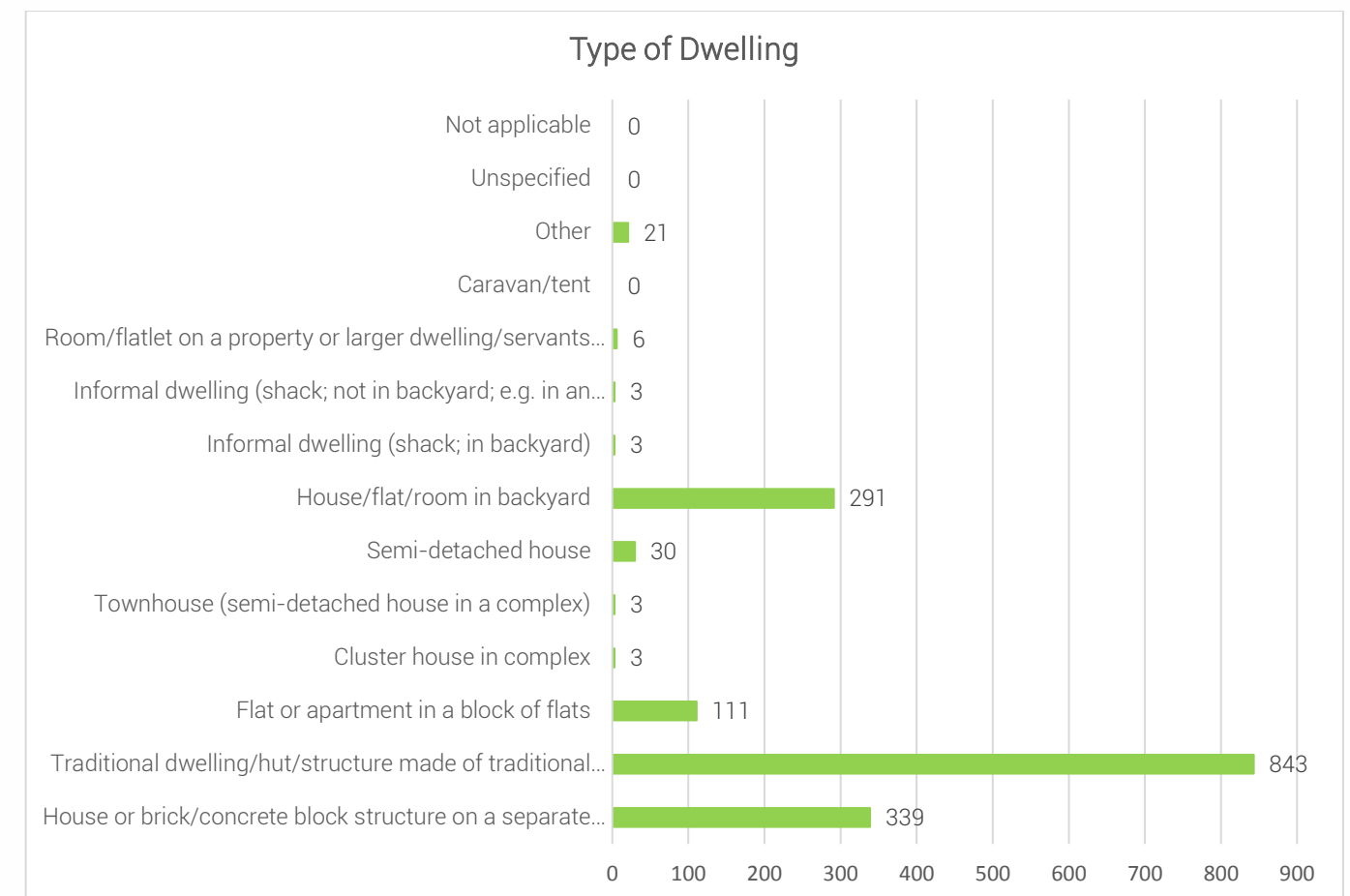


Figure 5: Types of Dwelling within Ward – Census 2011

## 5.3. Social Profile

### 5.3.1. Education Facilities: Community Feedback

The range of schools identified in the table below was developed form the community feedback sessions.

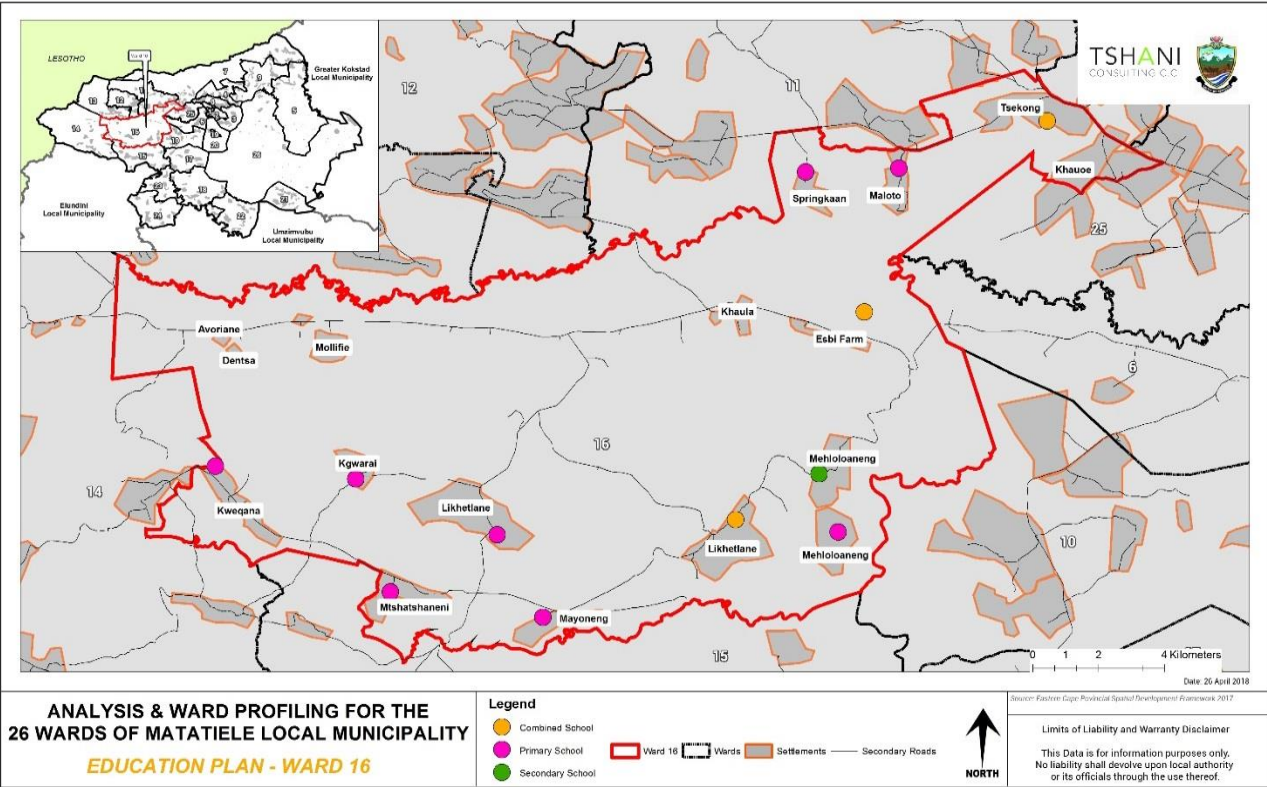
Name	Type	Area Located	Number Of Learners
Mokheseng	Senior Secondary School	Mehloloaneng	400
Mehlolaneng S.P.S	Junior Secondary School	Mehloloaneng	341
Mehloloaneng Preschool	Junior Secondary School	Mehloloaneng	32
Sketlane S.P.S	Junior Secondary School	Sketlane	228
Moeaneng S.P.S	Junior Secondary School	Moeaneng	129
Likhetlane S.P.S	Junior Secondary School	Likhetlane	
Lekhatla S.P.S	Junior Secondary School	Majoro	126



Mechachaneng S.P.S	Junior Secondary School	Mechachaneng	113
Tlopo S.P.S	Junior Secondary School	Maloto	163
Motlatsi S.P.S	Junior Secondary School	Sprinkaan	60
Makhaola J.S.S	Junior Secondary School	Tsekong	589
Vela Pre School	Junior Secondary School	Mbobob	21
Khoarai J.S.S	Junior Secondary School	Khoarai	92

Table 6: Education Facilities within Ward - Community Based Planning Program 2017 (Data Collection)

### 5.3.2. Education Facilities



Plan 2: Educational facilities- Census 2011

### 5.3.5. Churches and Religious Organisations: Community Feedback

The range of religious facilities identified in the table below was developed form the community feedback sessions.

Name	Location/Area	Number
ROMAN CHATHOLIC CHURCH	MEHLOLOANENG, LEKHETLANE	2
PRESBYTERIAN (UPCSA)	MBOBO &MALOTO, LEKHETLANE	3
METHODIST CHURCH	MAJORO, SKETLANE	2
CHURCH	SKETLANE	

Table 7: Churches and Religious Organisations within the Ward - Community Based Planning Program 2017 (Data Collection)

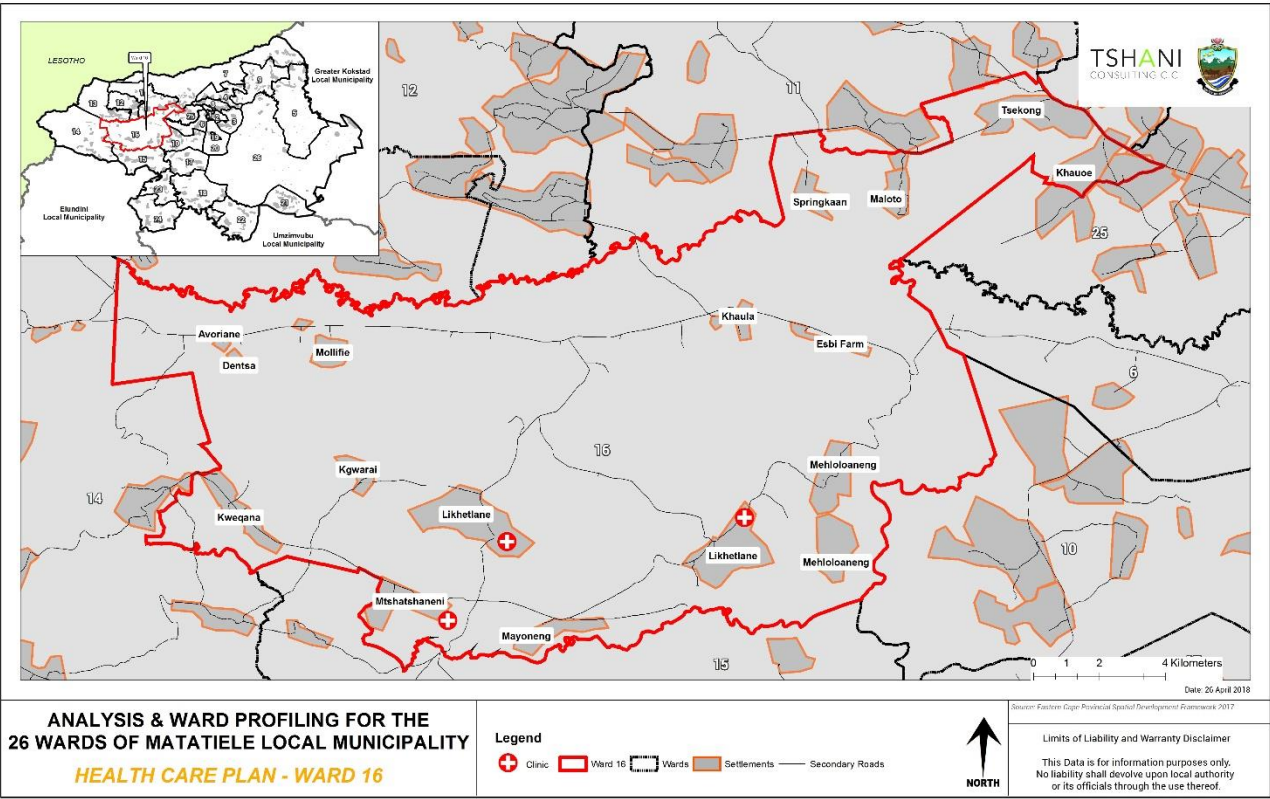
### 5.3.6. Health Care Facilities: Community Feedback

The community feedback identified 2 health centres within ward 16, there are two clinics located in Sketlane and Likhetlane providing health care services such as immunisation, family planning, HCT amongst others.

Name and type	Area located	Primary services provided
SHEPARD'S HOPE	SKETLANE	IMMUNISATION, FAMELY PLANING, HCT
LIKHETLANE CLINIC	LIKHETLANE	IMMUNISATION, FAMILY HEALTH CARE , HCT

Table 8: Health care faciitiies within ward- Community Based Planning Program 2017 (Data Collection)

5.3.7. Health Care Facilities:



Plan 3: Health care facilities- Census 2011

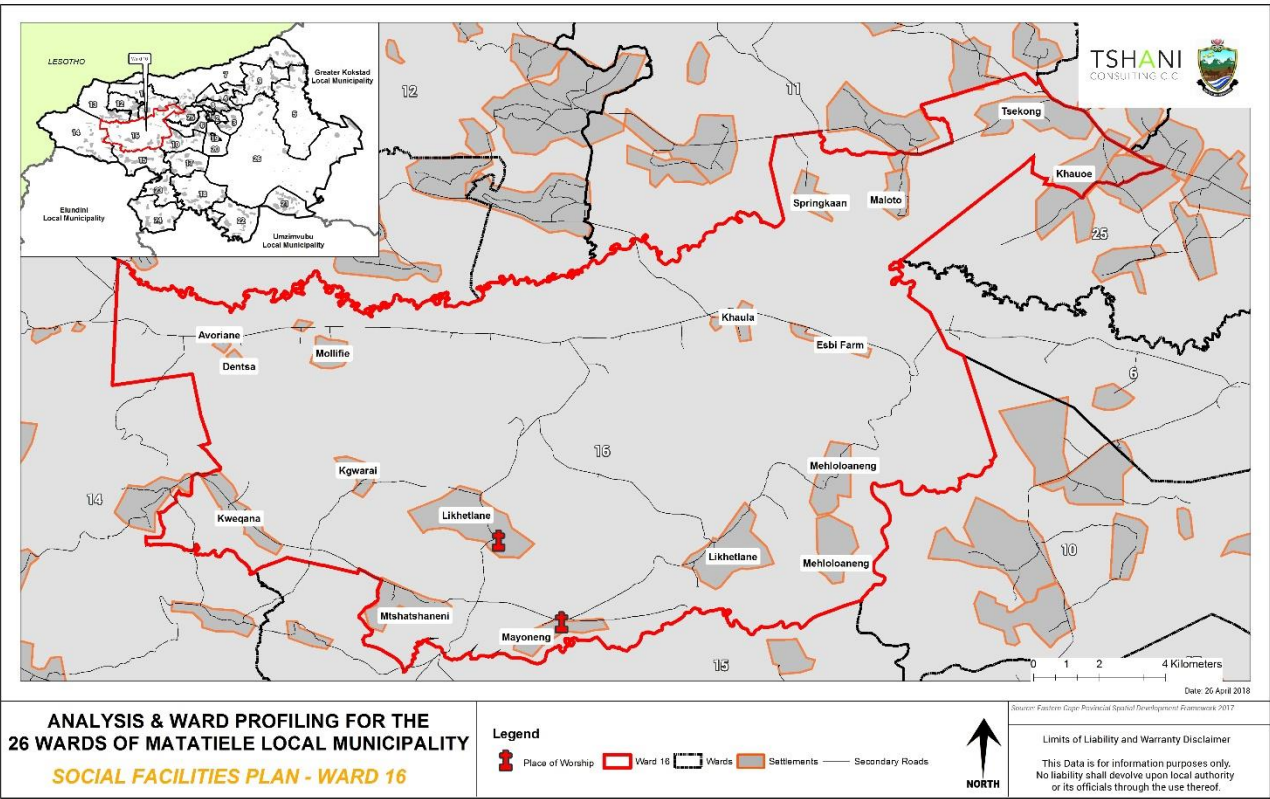
5.3.8. Community Hall: Community Feedback

Name and type	Area located
LIKHETLANE COMMUNITY HALL	LIKHETLANE
MECHACHANENG COMMUNITY HALL	MECHACHANENG
MOAENENG COMMUNITY HALL	MOAENENG

Table 9: Community Halls - Community Based Planning Program 2017 (Data Collection)

5.3.9. Other Social Facilities

The map below spatially identifies places of worship and police stations.



Plan 4: Other Social Facilities- Census 2011

5.4. Economic Profile

5.4.2. Unemployment and Individual Monthly Income

Over half of the population of ward 16 receives less than R400 or no income monthly. This community has low to income earners.



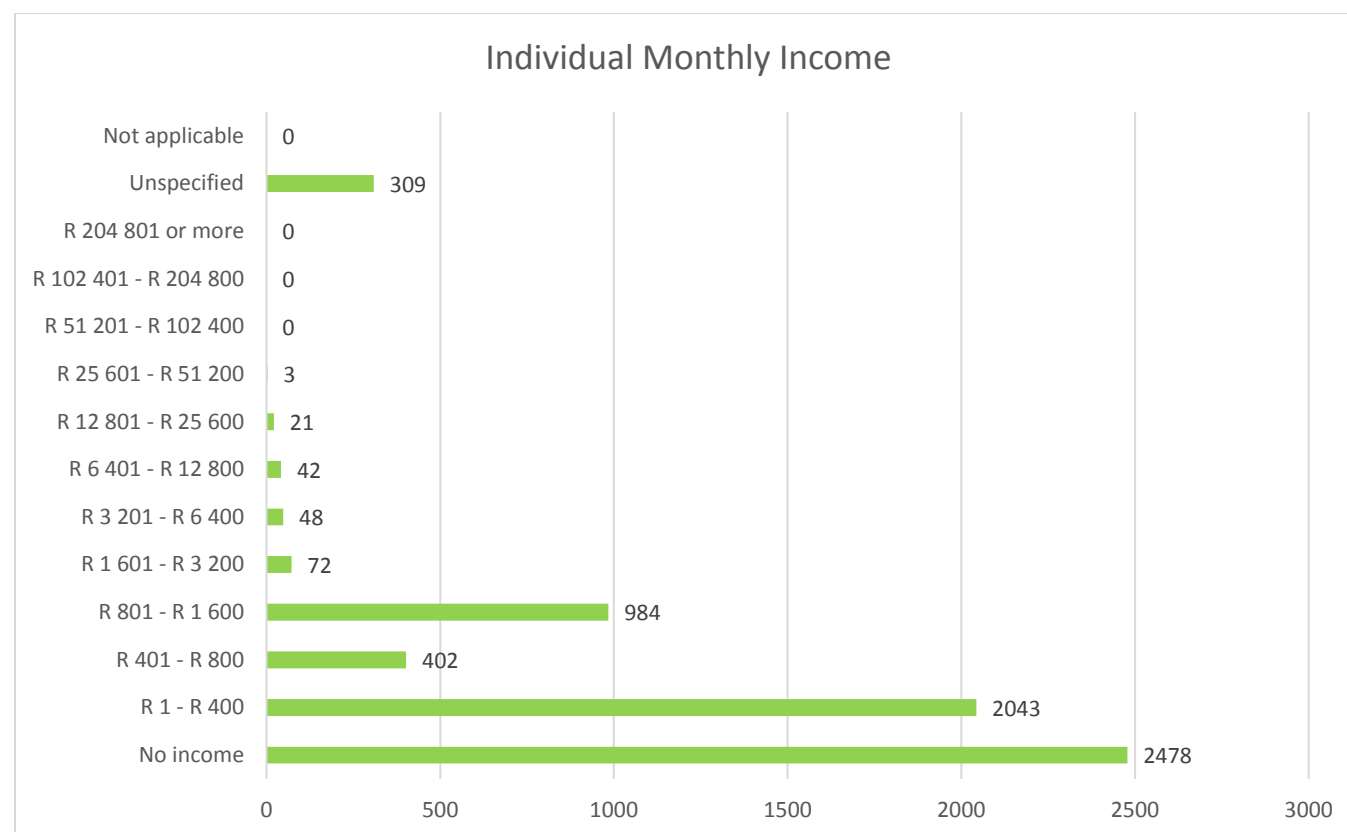


Figure 6: Individual Monthly Income - Census 2011

### 5.4.3. Economic Activities: Community Feedback

Spaza shops and taverns are the most dominant in Ward 16. This is very typical of areas with a very high unemployment rate and youth. A hair salon and internet cafe were also recorded in ward 16.

RETAIL( INDICATE SHOPS, SPAZA SHOPS, CAFÉ, TARVENS, SALONS, ETC)	
TYPE	LOCATION
SPAZA SHOPS	ALL VILLAGES
TRANSPORT	ALL VILLAGES
TAVERNS	

Table 10: Economic Activity - Community Based Planning Program 2017 (Data Collection)

### 5.4.4. Agricultural Activities

The community of ward 16 practises both commercial and subsistence farming for their agricultural products.

TYPE OF PRODUCTS	AREAS / VILLAGES	FOR HOUSEHOLD CONSUMPTION	FOR SELLING TO THE COMMUNITY
Animal product	All villages		Yes

Table 11: Agricultural activities- Community Based Planning Program 2017 (Data Collection)

### 5.4.5. Products Produced in Wards

The table below indicates that products such as traditional clothing and crafts are available within the ward that are locally produced. Such individuals responsible for these activities should be better supported and encourages to expand.

TYPE	ACTIVITY IN HOUSEHOLDS	ACTIVITY IN FARM
Cattle	Producing milk and meat	
Sheep	Producing wool and meat	
Goats	Producing wool and meat	
Horses	Ride	
Poultry	Producing eggs and meat	
Other (please indicate)		
TYPE	ACTIVITY IN HOUSEHOLDS	ACTIVITY IN FARM
Vegetables	Selling, food security	
Fruits	Same as above	
Grains		
Other (please indicate)		

Table 12: Products produced in ward- Community Based Planning Program 2017 (Data Collection)

### 5.4.6. Existing Skills

The ward constitutes of some diverse skills which is a major asset for the ward. Such individuals need to be further trained and opportunities to mentor other unemployed individuals within the community should be encouraged. The entrepreneurs within ward should also be given better access to market opportunities. There a broad range of professionally qualified individuals whom also are major assets for Ward 16.

TYPE OF SKILLS	EXISTING (INDICATE WITH YES/NO)	TYPE OF SKILLS	EXISTING (INDICATE WITH YES/NO)
Carpenters	YES	pottery	
Plumbing	YES	teachers	YES
Builders	YES	police	YES
Artists	YES	Health officials	YES
Gardening	YES	accountants	YES
cooking	YES	engineers	YES
sewing	YES	lawyers	YES
writing	YES	Other (indicate)	

drivers	YES		
farmers	YES		

Table 13: Existing Skills within the Ward: Community Based Planning Program 2017 (Data Collection)

## 6. Built Environment Assessment

### 6.1. Household Access to Waste Removal

The analysis found that majority of households within Ward 16 remove their own waste. The Municipality does not provide waste removal services in this ward.

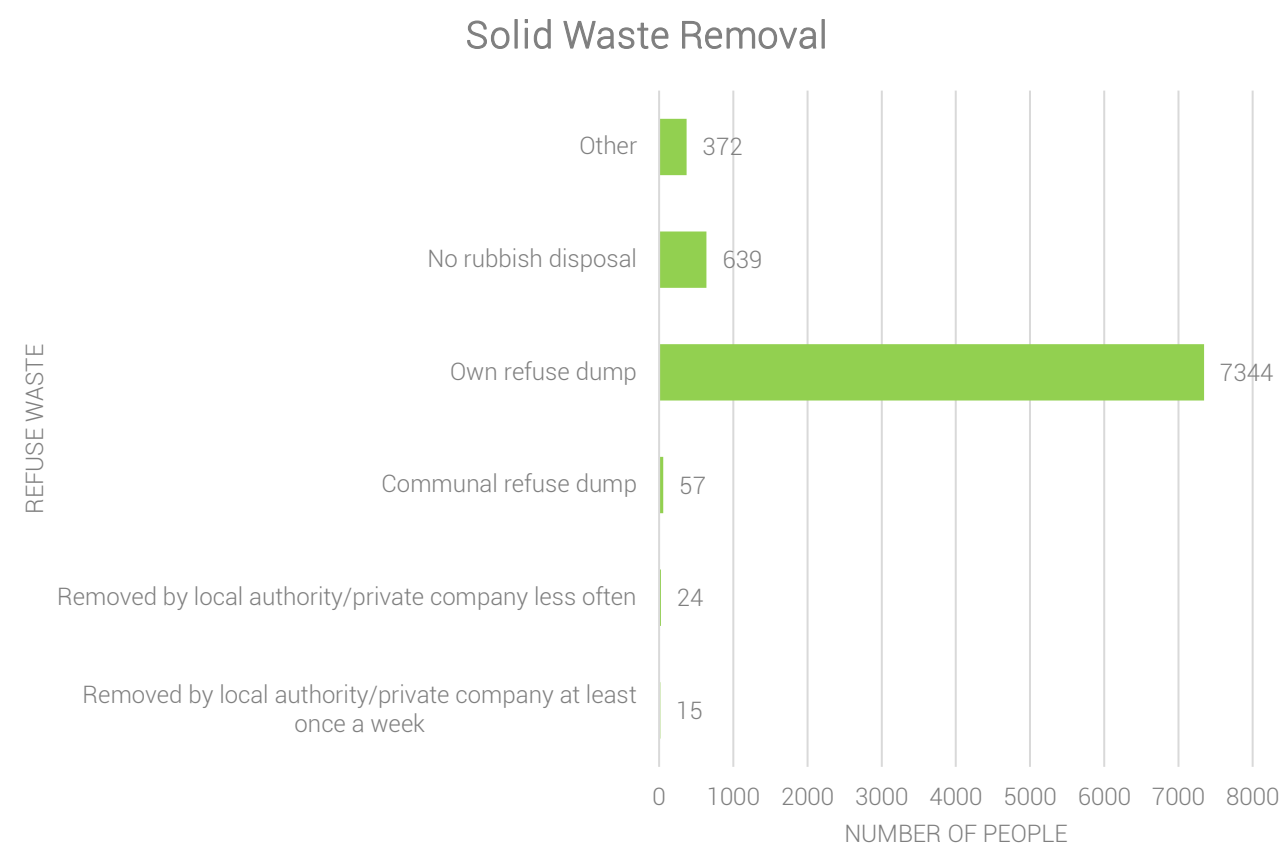


Figure 7: Access to waste disposal- Community Based Planning Program 2017 (Data Collection)

### 6.2. Household Access to Water

The main supplier of water is the District Municipality (ANDM) which currently provides water to Matatiele areas. All villages within the ward have access to clean water through community taps, even though some villages have access to community taps the water does not come out at times as a results a large number of people have to walk at least 1km away to source water from the dams or streams.

VILLAGE/LOCATION	COMMUNITY TAPS	WATER-INSIDE YARD	WATER-INSIDE HOUSE	BOREHOLES	DRAW WATER FROM STREAMS, DAMS, RIVER
MEHLOLOANENG	YES				YES
SKETLANE	YES				YES
MECHECHANENG	yes			YES	
MOYANENG	yes			YES	
LIKHETLANE	yes				yes
KHOARAI	yes				Yes
MAJORO	Yes				yes
MBOBO	YES				YES
MALOTO	YES				YES
SPRINKAAN	YES				YES
TSEKONG	YES				YES
KHUTSONG	YES				YES

Table 14: Access to water- Community Based Planning Program 2017 (Data Collection)

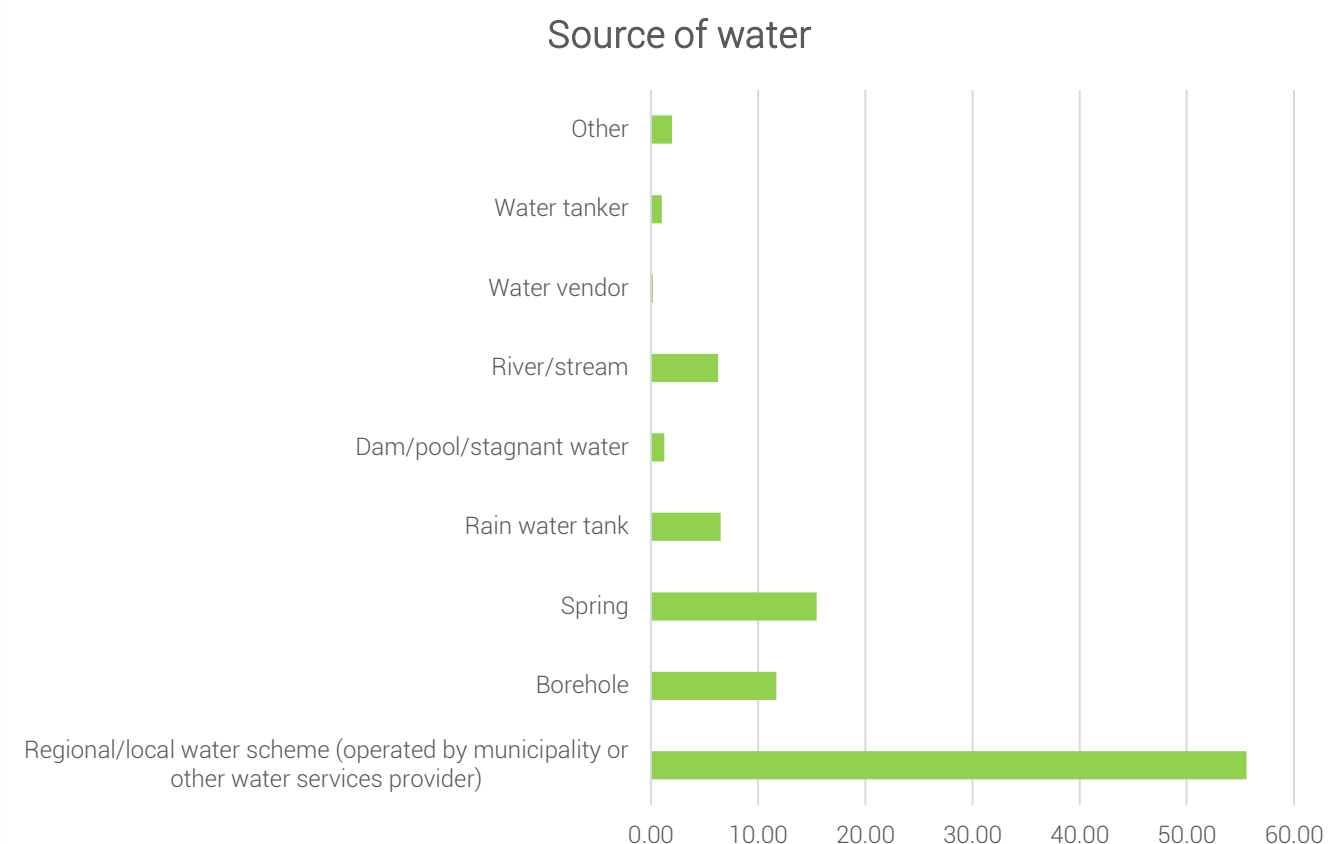


Figure 8: Source of Water supply within the Ward- Census 2011



## 6.4. Household Access to Sanitation

District Municipality (ANDM) currently provides sanitation to the Matatiele area. As per Community Based Planning Program (Data Collection) 8 villages have access to ventilated pit toilets within the whole ward. This shows there is still a large number of backlog with regards to the provision of sanitation as 4 villages have no access to ventilated pit toilets within the ward.

VILLAGE/LOCATION	VENTILATED PIT TOILETS	FLUSH TOILETS	Other
MEHLOLOANENG	YES		
SKETLANE	YES		
MOYANENG	YES		
MECHECHANENG			
LIKHETLANE			
KHOARAI			
MAJORO			
MBOBO	YES		
MAKOTO	YES		
SPRINKAAN	YES		
TSEKONG	YES		
KHUTSONG	YES		

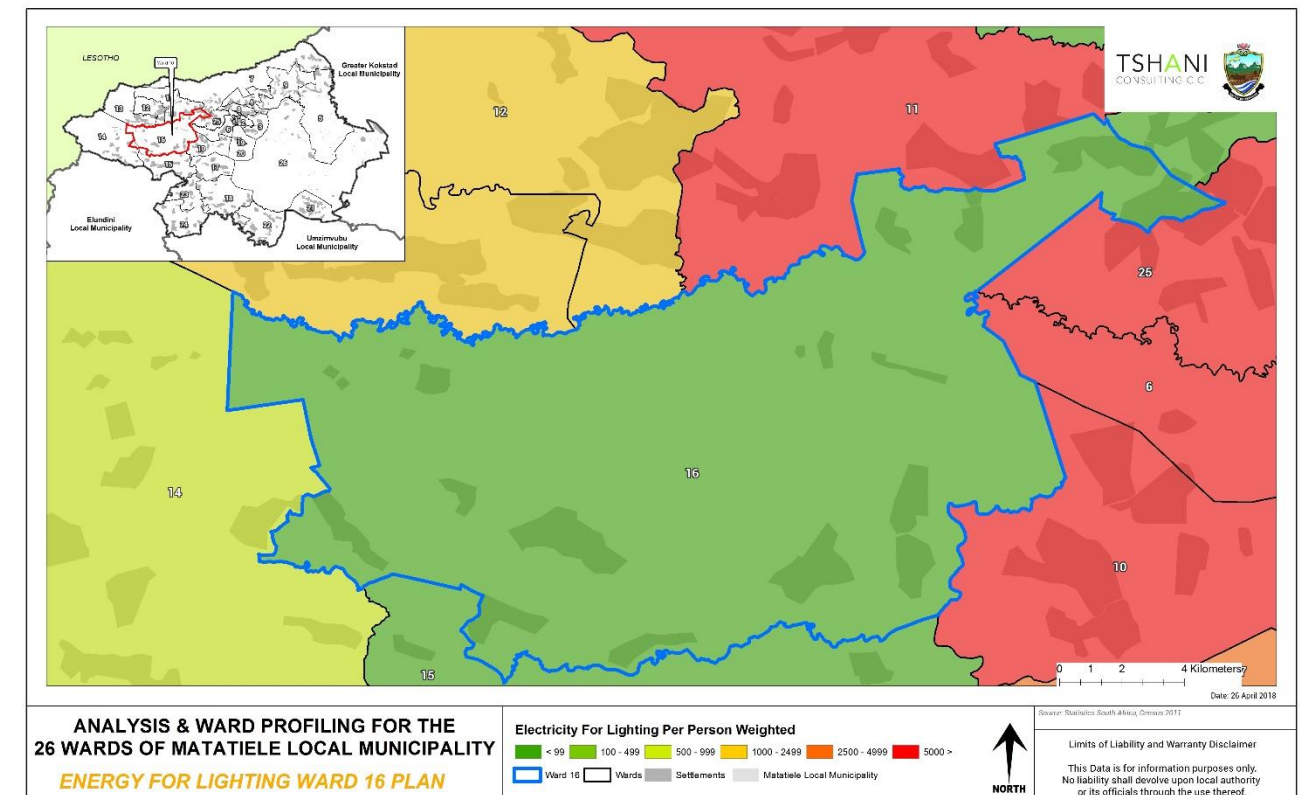
Table 15: Access to sanitation- Community Based Planning Program 2017 (Data Collection)

## 6.5. Main Source of Energy

As per the Community Based Plan Programme 2017 (Data Collection) the main source of energy within Ward 16 is electricity. This indicates that the level of service within the ward is relatively high. Out of twelve villages that have access to electricity only one village has no access to electricity which Majoro.

VILLAGE/LOCATION	ELECTRICITY	SOLAR	NO ELECTRICITY/SOLAR
MEHLOLOANENG	YES		
SKETLANE	YES		
MOYANENG	YES		
MECHECHANENG	YES		
LIKHETLANE	YES		
KHOARAI	YES		
MAJORO			YES
MBOBO	YES		
MALOTO	YES		
SPRINKAAN	YES		
TSEKONG	YES		
KHUTSONG	YES		

Table 16: Main source of energy- Community Based Planning Program 2017 (Data Collection)



Plan 5: Households using electricity for Lighting within the Ward - Census 2011

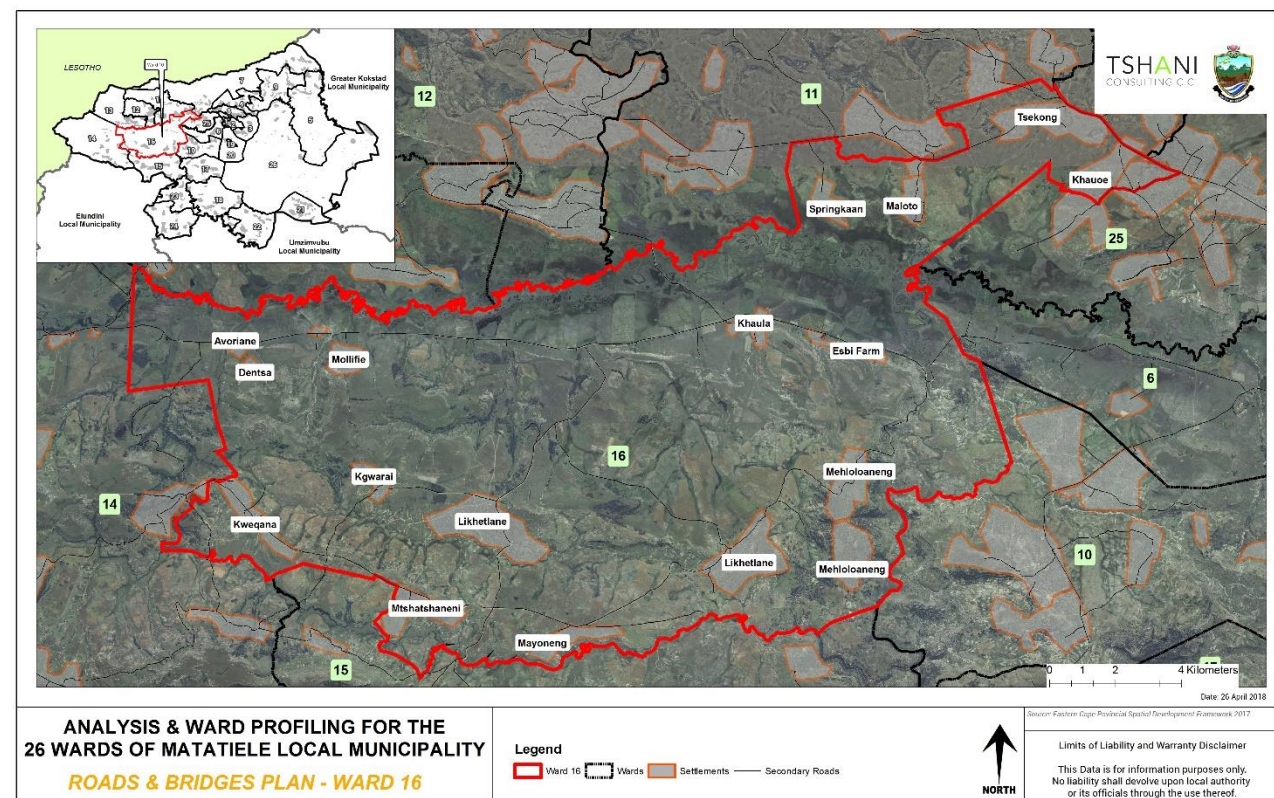
## 6.8. Roads and Bridges

The road conditions in ward 16 are very bad this is according to the community surveys conducted. The municipality needs to ensure that road are serviced and maintained regularly as they serve as a very important function in connecting the ward to other places and also the roads make it difficult for public transport to reach the community.

NAME AND TYPE	AREAS COVERED	CONDITION OF THE ROADS
Shaperds hope to mokheseng	Sketlane and Mehloloaneng	Bad condition
Likhetlane	Likhetlane	Bad condition
Khoarai	Khoarai	Bad condition
Mehloloaneng	Mehloloaneng	Under construction
Sprinkaan	Sprinkaan	Bad condition
Tsekong	Tsekong	Bad condition
Sabasaba	Khotsong and Sabasaba	Bad condition
Maloto	Maloto	Bad condition

Mbobob	Mbobob	Need
--------	--------	------

Table 17: Roads and Bridges within the Ward- Community Based Planning Program 2017 (Data Collection)



Plan 6: Roads and Bridges within the Ward - MLM GIS

## 7. Current Projects

The following table highlighted the key projects which have been identified by the community. The projects are mainly linked to education. Further projects need to be targeted towards building a local economic base and spatial resilience.

No	Name of project	PROJECT/PROGRAMME NAME	STATUS	WHO IS RESPONSIBLE
1	Mehloloaneng rural housing	Mehloloaneng rural housing	Under construction	Dept. Of Human Settlements

Table 18: Current Projects within the Ward- Community Based Planning Program 2017 (Data Collection)

## 8. Ward Needs and Priorities

The need and priorities which have been identified need to be prioritised in the municipal SDF and other local plans created. The projects range from short to long term projects and have been further broken down in the implementation plan.

VILLAGE/LOCATION/ SUB AREA	NEEDS IDENTIFIED
Springan Village	Access road maintainance and extention of the road,RDP houses,Community Hall,Dipping tanks,
Willary Farm and Ongeluksnek	Access road to the form (new) about 4km,Electricity Borehole or dam
Mehloloaneng-tlas	Access road from Kinira needs maintenance, Community hall, RDP houses, Electricity infills ,Toilets- infills
Likhetlane	Additional taps in the village plus a borehole, Likhetlane access road to be extended, The bridge to be upgraded, there is flooding during heavy rains, Assistance with ploughing of fields, Fencing of fields, Toilets
Moenang	RDP houses, Moaneng Access roads maintenance, Water, Foot bridge , Play area for children, Fencing of gravesite
Khorai	New access road linking Khorai and likhetlane, Khorai Access road maintenance, Sports fields, Fencing of grave site, Paypoint – sassa, RDP Houses, Satellite police station, Toilets, Community hall
Tsekong	RDP Houses, Toilets infills, Access road to the J.S.S to be maintained, Community halls, Fencing of grave site, Water
Majoro	Electricity in Majoro, Toilets, Access road linking Majoro to Avondale, Dipping tanks, Support to cooperatives, Library
Sketlane	Additional taps, Access road to Shepardshoek, Scholar transport, Toilets, RDP houses
Maloto	Sports grounds, RDP houses, Community hall, Access road to be maintained and extended.
Mbobob (Mpopo)	New access road, RDP Houses, Community hall, Clinic or mobile services



<b>Khutsong- HaAndries</b>	Electricity,Access roads to Khutsong,Community hall,water,LIMA
<b>Mechachaneng</b>	Water, additional taps needed,Toilets,Ploughing of fields

Table 19: Ward Needs and Priorities - Community Based Planning Program 2017 (Data Collection)

INFRASTRUCTURE PRIORITIES	SOCIO- ECONOMIC PRIORITIES
1 Electricity	1. Ploughing of Fields and fencing
2. Water	2.Police stations
3. Access Roads	3. Library services
4. RDP Houses	4. SMME Support
5. Community halls and sports fields	5. Scholar Support

Table 20: Infrastructure Priorities - Community Based Planning Program 2017 (Data Collection)

BURSARIES	ALL VILLAGES	Not accessible, Youth not being to access tertiary education.
-----------	--------------	---

Table 22: Social Challenges - Community Based Planning Program 2017 (Data Collection)

## 9. Stakeholders

The table below highlights the stakeholders which were engaged with during the Community engagement sessions.

NAME OF STAKEHOLDER	CONTACT PERSON AND TEL
Traditional leaders	078 657 4644
Health	076 530 4834
NGO'S	076 478 3603
Youth forum	079 283 4804
Farmers	063 824 4740
Education	083 499 9945
Agriculture	073 266 3675
Social development	060 438 9944
Home affairs	082 672 3700

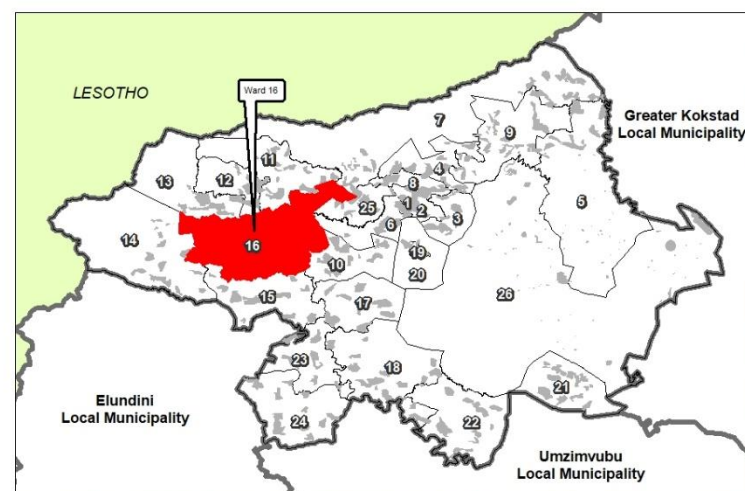
Table 21: Stakeholders - Community Based Planning Program 2017 (Data Collection)

## 10. Social Challenges

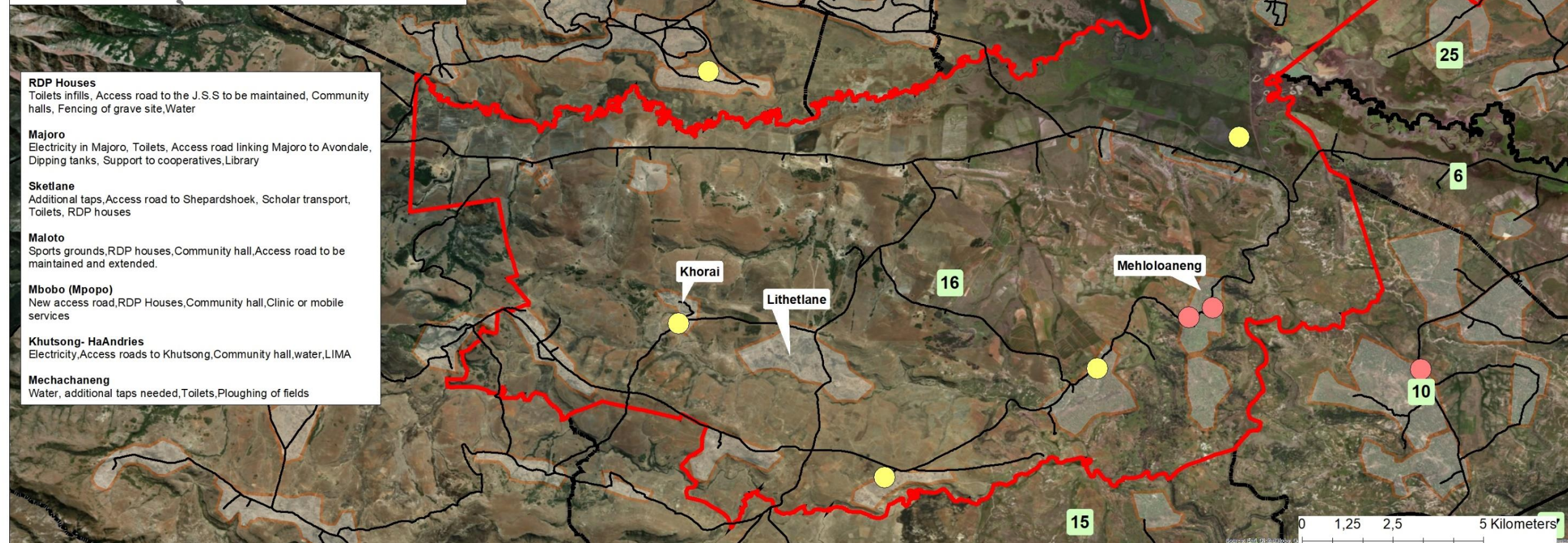
The table below highlights the social challenges which were identified during the Community engagement sessions.

CHALLENGES IDENTIFIED	AFFAECTED AREAS	IMPACT
ALCOHOL ABUSE	ALL VILLAGES	Unlawful actions
MURDER AND ASSAULT	ALL VILLAGES	Tensions in the community
RAPE	ALL VILLAGES	Threatening female members of the community
OLD PEOPLE AND CHILDREN WITHOUT IDENTITY DOCUMENT	ALL VILLAGES	Denying the rights of the people, Community not being able to access resources in the state.





- Springana**  
Access road maintenance and extension of the road, RDP houses, Community Hall, Dipping tanks,
- Willary Farm**  
Access road to the farm (new) about 4km, Electricity  
Borehole or dam
- Mehloloaneng-tlas**  
Access road from Kinira needs maintenance, Community hall, RDP houses, Electricity in fills, Toilets- infills
- Likhetlane**  
Additional taps in the village plus a borehole, Likhetlane access road to be extended, The bridge to be upgraded, there is flooding during heavy rains, Assistance with ploughing of fields, Fencing of fields, Toilets
- Moanang**  
RDP houses, Moanang Access roads maintenance, Water, Foot bridge, Play area for children, Fencing of gravesite
- Khorai**  
New access road linking Khorai and Likhetlane, Khorai Access road maintenance, Sports fields, Fencing of grave site, Paypoint – sassa, RDP Houses, Satellite police station, Toilets, Community hall



Date: 26 April 2018

## ANALYSIS & WARD PROFILING FOR THE 26 WARDS OF MATATIELE LOCAL MUNICIPALITY

### WARD PRIORITY - WARD 16

#### Legend

- IRM (Red dot)
- DoE (Yellow dot)
- Ward 16 (Red outline)
- Wards (Black outline)
- Settlements (Orange outline)
- Secondary Roads (Black line)



Source: Eastern Cape Provincial Spatial Development Framework 2017  
Matatiele Local Municipality

Limits of Liability and Warranty Disclaimer

This Data is for information purposes only.  
No liability shall devolve upon local authority  
or its officials through the use thereof.